

D3O® BP3 L1

D3O® BP3 L1

D3O uses patented, patent-pending and proprietary technologies to make rate-sensitive, soft, flexible materials with high shock absorbing properties.

The D3O® BP3 features a protective skin for increased durability. Compared to competing products, the D3O® BP3 L1 offers superior impact protection while being lighter with a longer tail for greater coverage. The protector has a customisable fabric back for increased comfort.

PRODUCT FEATURES

- D3O® patented technology
- Certified to exceed the performance requirements of EN 1621-2:2014, Level 1, including optional cold test at -10 degrees
- For winter sports: certified as suitable for use at temperatures down to -20 degrees
- Lightweight, ergonomic design for comfort and protection
- Extended tail
- Full back protector offering maximum coverage
- Available in 3 different sizes, determined by torso length (cm)



PAD INTEGRATION EXAMPLE

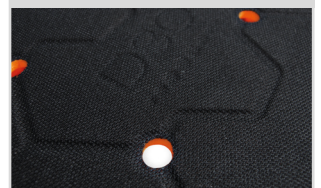


PIECE INTEGRATED
INSIDE JACKET

DEEP AIRFLOW CHANNELS



DURABLE CONTRAST FABRIC



HIGHLY FLEXIBLE GEOMETRY



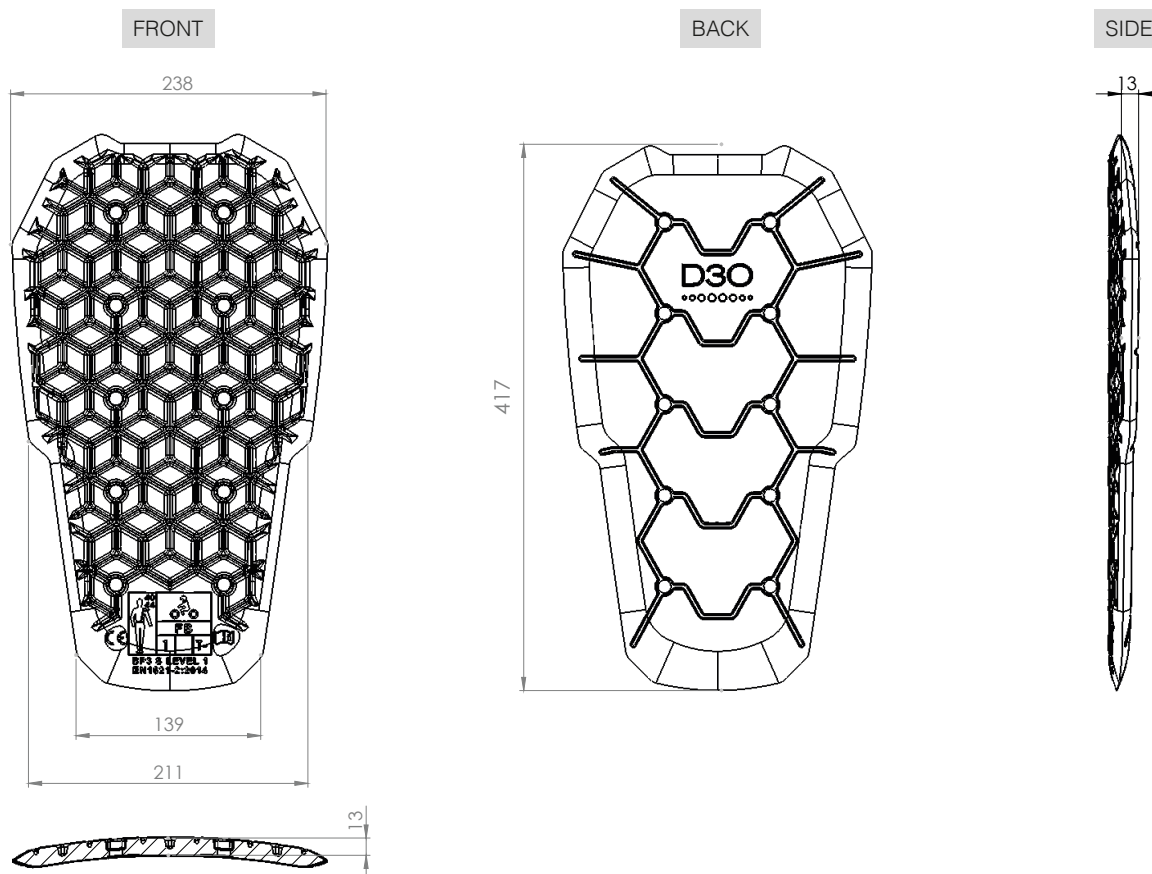
©2018 Design Blue Limited. All rights reserved.

Values shown represent typical product characteristics. For full details including material properties and product tolerances, please request SOQ document from D3O representative. The information provided is not intended to and does not create any warranties, expressed or implied, including any warranty of merchantability of fitness for a particular purpose. In accordance with the Company's policy of continuous improvement, D3O reserves the right to apply such improvements to its products and materials without notice. This data sheet shall not be reproduced or amended without the written consent of Design Blue Limited.

For more information on the D3O® BP3 L1, please contact your D3O Business Development Manager

TRUSTED IMPACT PROTECTION™

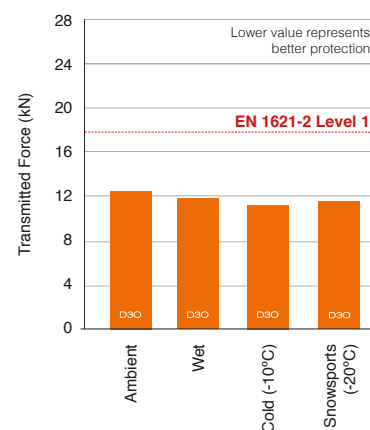
D3O® BP3 L1



D3O® BP3 L1 - Product details

Product Name	D3O® BP3 L1 Small	D3O® BP3 L1 Medium	D3O® BP3 L1 Large
Product Code	12153	12154	12155
Material Code	SF011	SF011	SF011
Dimensions (mm)	238 x 417	253 x 486	273 x 531
Thickness (mm)	13	13	13
Weight (g)	259	322	380
Torso Length (cm)	40 - 44	44 - 48	48 - 52

D3O® BP3 L1 - tested to EN 1621-2



©2018 Design Blue Limited. All rights reserved.

Values shown represent typical product characteristics. For full details including material properties and product tolerances, please request SOQ document from D3O representative. The information provided is not intended to and does not create any warranties, expressed or implied, including any warranty of merchantability of fitness for a particular purpose. In accordance with the Company's policy of continuous improvement, D3O reserves the right to apply such improvements to its products and materials without notice. This data sheet shall not be reproduced or amended without the written consent of Design Blue Limited.

TRUSTED IMPACT PROTECTION™